

## Update Your STARLINK® Multimedia Software and Navigation Maps

Applies To:

2019, 2020 and 2021 Ascent, Forester, Crosstrek, Impreza, BRZ, WRX/STI  
and 2019 Outback and Legacy (with Navigation)

Your Subaru is equipped with over the air “OTA” software update capability. Follow these steps to update your software and maps to improve software performance and functionality.

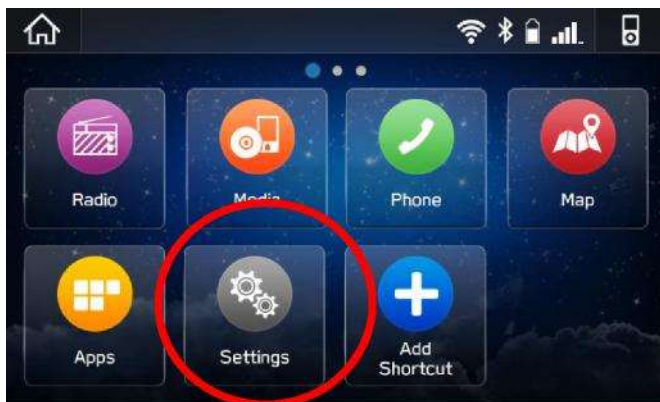
### CAUTIONS:

1. Move the vehicle to an outside location where the engine can be safely started and kept idling during the update process.
2. Never idle the vehicle in a closed space such as a garage, even if the garage door is open.
3. Once the vehicle is in a safe location, be sure the vehicle is in Park if CVT or Neutral if MT and the parking brake is fully engaged.
4. Unplug any devices, cables or other USB drives from the vehicles USB ports.

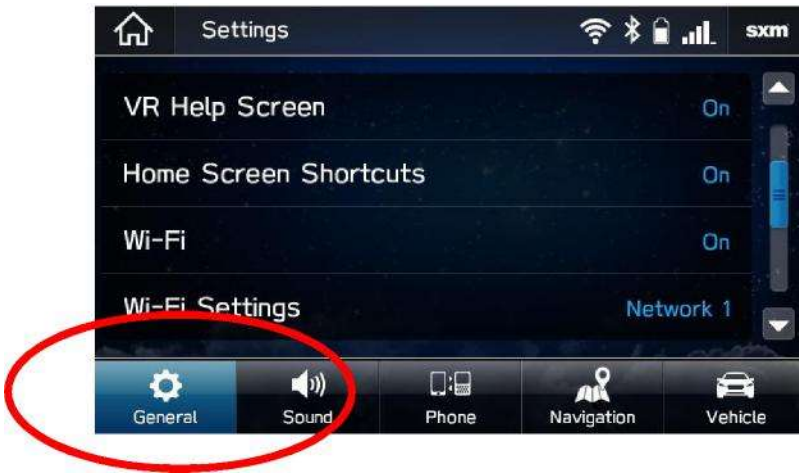
## Step 1- Prepare Your STARLINK System

1. First, let's make sure your system is ready for an update.

- Start the engine. Allow the audio unit to completely start up by selecting the **I Agree** button when it appears.
- Go to **Settings** on your vehicle multimedia screen.



- Select **General**



- Scroll down and select **System Information**



- If the system shows your version as **Rel\_UL.23.13.70** you are already up to date with the latest software and map updates.
- If the system shows your version as **Rel\_UG.22.13.70** you are already update to date with the latest software, but you don't have the latest map update. If you would like to update your maps, please follow Option 2 in the following instructions.
- If your system shows neither of these versions, please follow the instructions on the next page and choose the option that best suits you.

## Choose Your Update Method

You have a few options to update your Subaru. Click which one works for you:

5. [Option 1- Update Multimedia Software Via a WI-FI connection:](#) This will update the multimedia system software but not the on-board TomTom navigation maps.
6. [Option 2- Update Multimedia Software and Maps Using USB](#) This will update the multimedia system software AND the TomTom navigation maps at the same time. (Ideal for those that don't a strong Wi-Fi connection where their vehicle is located)
7. [Updating Navigation Maps Using Wi-Fi or STARLINK app-](#) If you choose Option 1 but still want to update your navigation maps, you have a few options if Option 2 isn't ideal for you. We will cover step by step instructions.